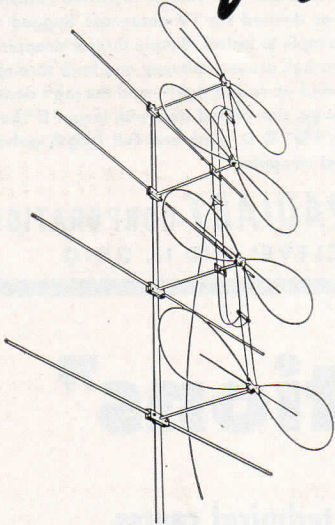


10-DAY TRIAL

OF THE BEST-PERFORMING
LOW-PRICED, ALL CHANNEL
ANTENNA ON THE MARKET!

THE FRINGE AREA

Butterfly
TRADE-MARK



You can enjoy perfect long-range television reception for 10 days with a Fringe Area Butterfly — and it won't cost you a cent for its use.

To acquaint you with this outstanding new all-channel antenna, Tel-a-Ray will send you a Fringe Area Butterfly you can use for 10 days.

If you want to keep the Butterfly after 10 days, you may do so at a price of only \$29.95 (list price) for the four-bay array shown above. If not, send it right back.

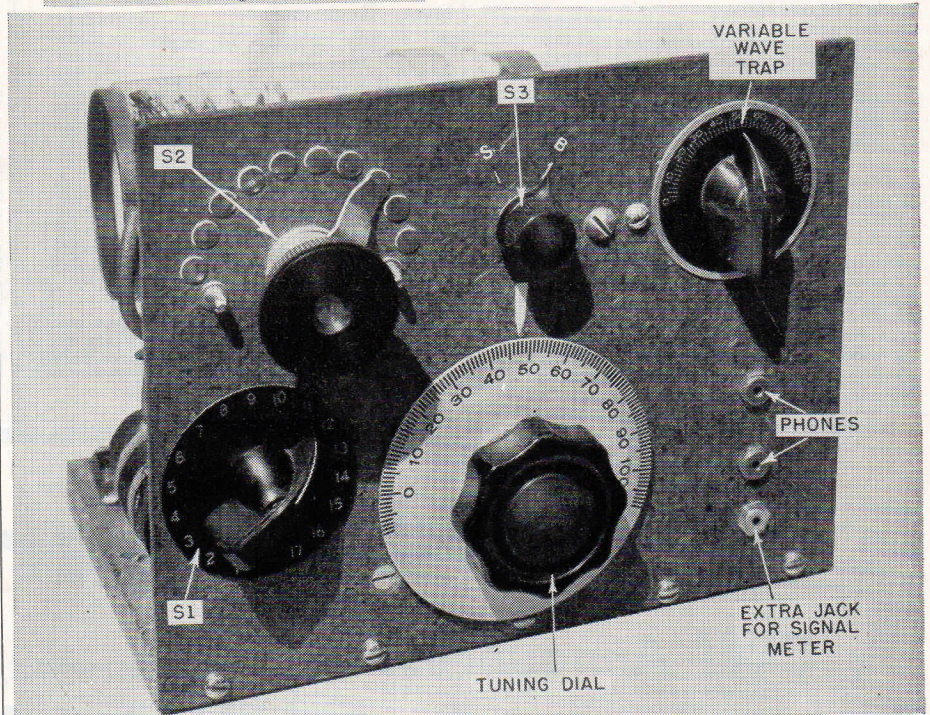
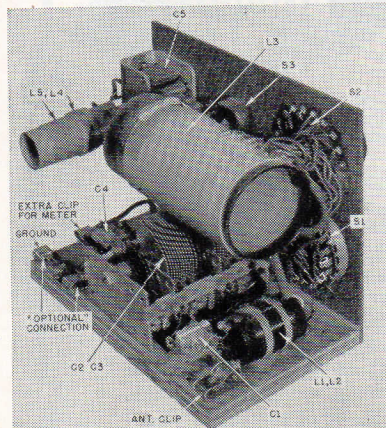
Your only cost for using this matchless, long-range, all-channel antenna for 10 days is the shipping charge.

Give your family or customer TV reception at its best. Try a Butterfly! It's a Tel-a-Ray exclusive.

TEL-A-RAY
ENTERPRISES, INC.
HENDERSON, KY.

DX CRYSTAL RADIO RECEIVER

By JOSEPH AMAROSE



CRYSTAL radio fans follow a pattern. They search everlastingly for a newer, better circuit that will excel their previous best effort. They want better volume, greater selectivity, higher sensitivity. Everlastingly, too, they must compromise, for no such optimum state can be achieved. Occasionally, an experimenter does find a circuit that is outstanding. Such is the hookup shown. No novelty is claimed, however; basically the circuit is old—only a few embellishments have been added. Nor must the reader expect that this receiver combines all the desired characteristics. What the writer (who has spent some 30 years testing and building the latest crystal “super-doopers”) does promise is an unusual, versatile receiver that has consistently given fine results.

All last winter (in Virginia) this receiver tuned in stations from Canada to Cuba and from the Atlantic to the state of Utah, sometimes as early as 8 pm. Transmitters in Atlanta, Louisville, Chicago, Detroit, New York, New

Orleans and Cleveland were most frequently logged. Even on the hottest summer nights, dx came in with impressive regularity.

No less impressive is the selectivity of this rig. All six of the Richmond locals are received clearly with no annoying hash or cross-talk. And three of these stations are only 40 kc apart! Worse still, one is a weak sister between two strong ones. Yet this set gets all with ease. With proper co-ordination of controls all locals (from 910 to 1480 kc) can be tuned in with just the one main tuning dial. Tested in Baltimore by M. M. Schuman, another old-timer (who built this set), the receiver tuned in all eight locals clearly there, plus the more distant WTOP in Washington, D. C.

Volume on the locals is high. Richmond's WRNL, 5,000-watt transmitter, five miles away, operates a magnetic speaker loud enough to be heard clearly 15 feet from the reproducer. It doesn't shake the rafters but every word of speech is intelligible at that distance.

RADIO-ELECTRONICS

